

Rugged Tablet EM-T895/Q89



Product Feature:

- Support NFC
- IP65 Grade
- Support GPS, Galileo, Beidou, Glonass

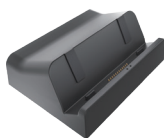
Ordering Information:

Model	Performance Parameter
EM-T895	MTK OCTA Core CPU Android 11 GMS 4GB/6GB RAM 64GB/128GB
Model	Performance Parameter
EM-Q89	Qualcomm OCTA Core CPU Windows 11 4GB/6GB RAM 64GB/128GB

Specification Parameter

Basic Parameter	Dimension	219 x 139 x 12.5mm	
	Weight	524g	
	Device Color	black	
	LCD	8" IPS 16:10, 1200*1920	
	Touch Panel	10 point capacitive, G+G	
	Camera	Front 5.0MP, Rear 13.0MP	
	I/O	TF card x 1, SIM card x 2, Two out of three (Micro SIM+TF or Micro SIM+Nano SIM) Type-C x 1 12pin Pogo Pin x 1	
Battery	Power	USB Type-C, supporting fast charging PE+ 2.0, Max Power 18W, max 9V/2A (EM-T895) USB Type-C, voltage stabilizing 12V/2.5A (EM-Q89)	
	Capacity	3.8V/7200mAh (EM-T895), 7.6V/3900mAh (EM-Q89)	
	Type	Built-in Lithium-ion polymer battery	
Communication	Endurance	8hrs (EM-T895), 9hrs (EM-Q89)	
	GNSS	GPS/Galileo/Glonass/BeiDou, Optional single Beidou	
	WIFI	2.4G+5G (5.1G+5.8G), WIFI 802.11(a/b/g/n/ac)	
	Bluetooth	BT 5.1	
	2G/3G/4G/5G (Optional)	EM-T895 TDD: B34/B38/B39/B40/B41, FDD: B1/B2/B3/B4/B5/B7/B8/B17/B20, WCDMA: B1/B2/B5/B8, GSM: B2/B3/B5/B8 5G: N1/N3/N5/N28/N38/N41/N77/N78/N79 EM-Q89 (EU) TDD: B38/B39/B40/B41, FDD: B1/B3/B5/B7/B8/B20/B28a/B28b, WCDMA: B1/B3/B5/B8 EM-Q89 (US) FDD: B2/B4/B5/B12/B13/B14/B17/B25/B26/B30/B66/B71, TDD: B38/B41N, WCDMA: B2/B4/B5	
	Reliability	Operate Temperature	-10 °C ~ 50 °C
		Store Temperature	-20 °C ~ 60 °C
Humidity		95% Non-Condensing	
IP Grade		IP65	
Expansion Module	NFC	Built-in, ISO/IEC 14443A/B, ISO/IEC 15693, ISO/IEC 18092, mifare	
	2D	Optional, EM07	

Accessory:



Docking Charger